

Worthing

the Sussex coast
& the South Downs

Itinerary ideas for groups

Worthing town centre & seafront

Worthing is so easy to get around. The town centre with its fantastic shopping offering both high street names as well as some unique independent retailers and eclectic mix of cafes, bars and restaurants is always only a stones throw from the 5 miles of flat palm-tree lined promenade with gardens and award winning pier.

Suggested itinerary ideas

There's so much more to Worthing than its seafront. Here are some ideas to help you make the most of your visit and fill your day.

Coach Parking

- Drop off and pick-up bays are available at the Lido, on Marine Parade (15 minute limit, refer to signs).
- Day-time coach parking is available free, on the seafront at the western end in West Parade (refer to signs).
- Overnight coach parking is available in the Lido and West Parade spaces and is also available at the NCP Car Park in Union Place in the heart of the town (5 minutes walk from the seafront and large hotels) at £12 per coach, per night. Telephone 0845 050 7085 to prebook.

Markets

- General Market - every Wednesday
- Farmers' Market - every 4th Saturday of the month

Suggested time required

Compliment your visit with a stop in town or simply spend the day; there's plenty to keep you occupied

How to get here

For Highdown Gardens and English Martyrs Church leave the A27 and follow the A280. Turn left onto the A259. Continue to follow the A259 beyond and it will take you into the town centre - follow the signs.

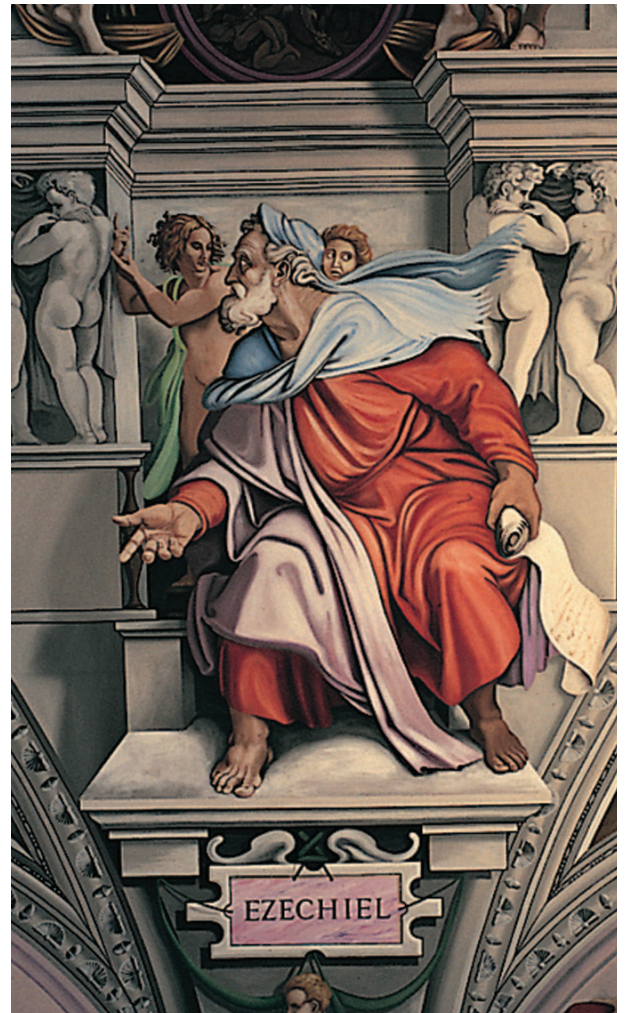
English Martyrs Church

Address: Goring Way, Worthing,
West Sussex, BN12 4UE
Tel No: +44 (0)1903 506890
Web: www.dabnet.org/goring.htm

The church is notable for having the only known reproduction of the Sistine chapel in the world. It is two-thirds the size of the original with colours that match the ceiling in Rome. The church is attached to the attractive and historic Jupp's Barn. Entry Free. Souvenir shop.

Opening: Tuesday - Friday 10am - 4pm
(From Easter - Christmas)

Coach Parking: Available free
Special arrangements: Group visits must be arranged in advance. Group tours/talks available by arrangement.
Suggested time required: 45 mins



Worthing Theatres

Address: Assembly Hall - Stoke Abbott Road,
Worthing, West Sussex, BN11 1HQ

Address: Pavilion Theatre - Marine Parade,
Worthing, West Sussex, BN11 3PX

Address: Connaught Theatre and Ritz Digital
Cinema - Union Place, Worthing,
West Sussex, BN11 1LG

Tel No: Box Office for all +44 (0)1903 206206
Web: www.worthingtheatres.co.uk

With three venues to choose from there really is something for everyone at Worthing Theatres!

Coach Parking: Drop off only at venue
Special arrangements: Group rates available



Worthing Museum & Art Gallery

Address: Chapel Road Worthing,
West Sussex, BN11 1HP
Tel No: +44 (0)1903 221067 /
+44 (0)1903 221448 on Saturdays.
Web: www.worthingmuseum.co.uk

The museum's Costume and Toy collections are amongst the largest in the country. There are also fascinating collections of fine and decorative art and archaeology. An exciting programme of contemporary and historical exhibitions fills the art gallery, sculpture garden and studio. Shop, disabled access and toilets. Free Entry.

Opening: Tuesday - Saturday 10am - 5pm
Special arrangements: Groups are advised to contact the museum in advance of any visit. Guided tours/talks can be arranged in advance (charges will apply).
Suggested time required: 1 - 2 hours



Highdown Gardens

Address: A259 Littlehampton Road,
Ferring, West Sussex BN12 6PG
Tel No: +44 (0)1903 221067
Web: www.highdowngardens.co.uk

This 90 year old garden, set in the downland countryside, was created by Sir Frederick and Lady Stern, working for 50 years to prove that plants could grow on chalk. The gardens have achieved 'Green Flag' status, an accolade issued by the Civic Trust. A wide variety of plants and colour throughout the seasons provides the backdrop to outdoor Shakespearean performances by The Rainbow Theatre in the summer. Free entrance & parking.

Opening:

- April - September (Monday - Sunday) 10am - 6pm
- October - November (Monday - Friday) 10am - 4.30pm
- December - January (Monday - Friday) 10am - 4pm
- February - March (Monday - Friday) 10am - 4.30pm

Suggested time required: 1 hour +
Refreshments:
Highdown Tearooms - open daily. Groups must book in advance.
Tel No: +44 (0)1903 246984
www.highdowntearooms.co.uk/
Highdown Hotel - Carvery restaurant. Groups are advised to book in advance.
Tel No: +44 (0)1903 700152 www.relaxinnz.co.uk/hotels/the-highdown-hotel/

Coach Parking: Available free of charge. Access must be arranged well in advance.
Special arrangements: Group visits must be arranged in advance.



Worthing offers a selection of quality assessed accommodation, conveniently located within easy reach of the seafront and Worthing town centre.

Full details can be found at www.visitworthing.co.uk

Chatsworth Hotel

Steyne, Worthing, BN11 3DU www.chatsworthworthing.co.uk

Tel: +44(0)1903 236103 Contact: Reservation team

An elegant, 3 star with silver award and GTBS silver award, town centre hotel recently refurbished and well positioned overlooking the sea, promenade and gardens.

Group rates available from :

£35.00 (low season) £47.00 (high season & Christmas) per person, per night – half board. £5 single supplement.



Ardington Hotel & Indigo Restaurant

Steyne Gardens, Worthing, BN11 3DZ

www.ardingtonhotel.co.uk Tel: +44(0)1903 230451

A 3 star hotel with contemporary restaurant located conveniently close to the town centre and seafront. Well positioned overlooking gardens.

Group rates available from £35.00 per person, per night – Bed & Breakfast or from £55.00 per person, per night – Dinner, Bed & Breakfast.



The Burlington

Marine Parade, Worthing, BN11 3QL

www.theburlingtonworthing.co.uk Tel: +44(0)1903 211222

Contact: Pavol Babjak

Graded 4 star Guest Accommodation this property has many features that you might expect to find in a hotel. Located right on the seafront it has 26 contemporary style bedrooms as well as a restaurant.

Group rates available from £35.00 per person, per night – Bed & Breakfast. £5 single supplement. Please call to negotiate Dinner, Bed & Breakfast inclusive rates.



What's on

Worthing has an extensive programme of events throughout the year including major favourites such as: The Worthing International Birdman Competition, The Bowls England National Bowls Championships, The Worthing Festival and many more. To find out more visit the What's On section of our website.

Tour information

Help get the best out of your visit by arranging a guided tour. The following contacts can arrange something just for you:

Blue Badge Guide – Frances Farrer-Brown - 01903 724129 - www.blue-badge-guides.com

Local Guide & Historian – Chris Hare - 01903 200648 - www.sussexwalksandtalks.co.uk

Email: tourism@adur-worthing.gov.uk Tel: +44(0)1273 263022

Web: www.visitworthing.co.uk

Other guides available: Visitor Guide, Pocket Guide, Summer Events Guide

Follow us on:

